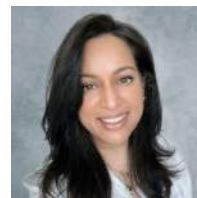


Ami Bhalodia, MD

Pathologist



Consultant Pathologist with over 17 years of experience in anatomic and clinical pathology, with fellowship training in cytopathology, genitourinary and medical renal pathology. Committed to advancing medical education, research, and delivering precise patient care. Adept at utilizing innovative digital pathology tools and contribute meaningfully to the field of pathology.

318-617-9959
bhalodiaami@gmail.com

EMPLOYMENT HISTORY

Staff Pathologist-Remote/Digital

Arkana Laboratories at Little Rock, AR

Mar 2026 - Present

Consultant Pathologist-Remote/Digital

The Pathology Laboratory at Lake Charles, LA

Aug 2023 - Feb 2026

Consultant Pathologist

Precision Pathology at San Antonio, TX

Aug 2013 - Jul 2017

Assistant Professor

Department of Pathology, LSU Health at Shreveport, LA

Jul 2010 - Jul 2011

EDUCATION

Renal-Genitourinary Pathology Fellowship

Department of Pathology at LSU Health -Shreveport, LA

Jul 2009 - Jun 2010

Cytopathology Fellowship

Department of Pathology at LSU Health -Shreveport, LA

Jul 2008 - Jun 2009

Chief Resident

Department of Pathology at LSU Health -Shreveport, LA

Jul 2007 - Jun 2008

Anatomic and Clinical Pathology Residency

Department of Pathology at LSU Health -Shreveport, LA

Jul 2004 - Jun 2008

Medical School

Grace University School of Medicine at Cambridge, UK and Chicago, IL

Sep 1999 - Dec 2003

Applied Ecology, minor in Fine Arts

University of California at Irvine, CA

Sep 1994 - Jun 1999

BOARD CERTIFICATIONS

Anatomic and Clinical Pathology, American Board of Pathology, certified 2008
Cytopathology, American Board of Pathology, certified 2009

STATE MEDICAL BOARD LICENSES

Louisiana, Texas, Arizona, California

RECOGNITIONS

Albert G. Smith Research Symposium Award, LSUHSC-Shreveport, LA, June 2010

Albert G. Smith Research Symposium Award, LSUHSC-Shreveport, LA, June 2008

Medical Student Clerkship Leadership Award, Jackson Park Hospital, Chicago, IL, June 2002

Basic Sciences Honors Award, Grace University School of Medicine, Cambridge, UK, June 2001

Cum Laude honors in Applied Ecology, University of California, Irvine, CA, June 1998

CONTRIBUTING AUTHORSHIP

1. Bonsib S, Bhalodia A. Renal Neoplasms: An Update on Immunohistochemical and Histochemical Features. *Dako Connections*. 2010 Feb; 178-186.

2. *Kidney Diseases* by Robert Colvin, MD, Diagnostic Pathology Series, Amirsys, 2011. Contributing Author.

PUBLICATIONS

1. Shakelford RE, Bhalodia AR, Cotelingam JD, Veillon DM, and Lowery-Nordberg M, Increased transferring receptor expression following 11q23 deletion as a mechanism of malignant progression in chronic lymphocytic leukemia. *Med Hypotheses*. 2006;66(3):509-12. Epub 2005 Dec.

2. Sheth A, Palmer R, Jordan PA, Manas K, Bhalodia A. Eosinophilic Gastroenteritis of the Pancreas: an unusual Cause of Obstructive Jaundice. *J Clin Gastroenterol*. 2006 Aug;40 (7):623-5.

3. Bonsib S, Moghadamfalahi M, Bhalodia A. Lymphatic Differentiation Renal Angiomyolipomas, *Hum Pathol*. 2009 Mar;40(3):374-80

4. Zhang S, Bhalodia A, Swartz B, Abreo F, Fowler M. Fine needle Aspiration of Parapharyngeal Space Adult Rhabdomyomas. *Acta-Cyto*. 2010 Sept; (54): 775-9.

5. Bonsib S, Bhalodia A. Retrograde Venous Invasion in Renal Cell Carcinoma: A Complication of Sinus Vein and Main Renal Vein Invasion, *Modern Pathology*. 2011, (1-8).

6. Raissian Y, Nasr SH, Larsen CP, Colvin RB, Smyrk TC, Takahashi N, Bhalodia A, Sohani AR, Zhang L, Chari S, Sethi S, Fidler ME, Cornell LD. Diagnosis of IgG4-related tubulointerstitial nephritis. *J Am Soc Nephrol*. 2011

7. Hassell LA, Forsythe ML, Bhalodia A, Lan T, Rashid T, Powers A, Bui MM, Brickman A, Gu Q, Bychkov A, Cree I, Pantanowitz L. Toward Optimizing the Impact of Digital Pathology and Augmented Intelligence on Issues of Diagnosis, Grading, Staging, and Classification. *Mod Pathol*. 2025

PRESENTATIONS

1. Comrov S, Bhalodia AR, Reddy AT, Keswani AS. Pain Survey Aids in the Management of Ambulatory Patients. Family Practice Residency Research Symposium, Chicago, Illinois, June 2002.

2. Bhalodia AR, Martin S, Lowery-Nordberg M. Chromosomal Abnormalities as Screening and Prognostic Markers in Prostate Cancer. Barlow Symposium, Shreveport, Louisiana, February 2005.

3. Bhalodia AR, Martin S, Lowery-Nordberg M. Chromosomal Abnormalities as Screening and Prognostic Markers in Prostate Cancer. LSUHSC-Shreveport Residents Research Symposium, May 2005.

4. Bhalodia AR, Martin S, Lowery-Nordberg M. Chromosomal Abnormalities as Screening and Prognostic Markers in Prostate Cancer. American Association of Physicians of Indian Origin Convention, Houston, Texas, June 2005.

5. Bhalodia AR, Martin S, Lowery-Nordberg M. Chromosomal Abnormalities as Screening and Prognostic Markers in Prostate Cancer. Association of Molecular Pathology Conference, Scottsdale, Arizona, November 2005.

6. Bhalodia AR, Martin S, Lowery-Nordberg M. Apoptosis as a Prognostic and Therapeutic Marker in Prostate Adenocarcinoma. LSUHSC-Shreveport Residents Research Symposium, May 2006.

7. Rivette D, Samuel D, Bocchini J, Painter B, Bhalodia A, George R, Matthews-Greer J. Human Papillomavirus Genotypes in Adolescents. Southwestern Association of Clinical Microbiology, Dallas, Texas, September 2006.

8. Tenorio GC, Hawthorne L, Bhalodia A and McCaskill DL, LSUHSC at Shreveport, A 7-year retrospective study of adverse transfusion reactions in a university hospital. American Association of Blood Banks Annual Meeting and TXPO, Miami, Florida, October 21-26, 2006.

9. Bhalodia AR, Martin S, Lowery-Nordberg M. Apoptosis as a Prognostic and Therapeutic Marker in Prostate Adenocarcinoma. Association of Molecular Pathology Conference, Orlando, Florida, November 2006

10. Bhalodia A, Pollen M, Abreo A, Martin S, Nathan C, Lowery-Nordberg M. A Potential Therapeutic Target in Head and Neck Squamous Cell Carcinomas. Albert Smith LSUHSC-Shreveport Residents Research Symposium, May 2007
11. Bhalodia A, Pollen M, Abreo A, Martin S, Nathan C, Lowery-Nordberg M. A Potential Therapeutic Target in Head and Neck Squamous Cell Carcinomas. Association of Molecular Pathology, Los Angeles, California, November 2007
12. Bhalodia A, Painter B, Abreo A, Adegboyega P. S-100: Assisting in the Identification of Microscopic Perineural Invasion in Head and Neck Squamous Cell Carcinomas. USCAP, Denver, Colorado, February 2008
13. Bhalodia A, Painter B, Abreo A, Adegboyega P. S-100: Assisting in the Identification of Microscopic Perineural Invasion in Head and Neck Squamous Cell Carcinomas. Albert Smith LSUHSC-Shreveport Residents Research Symposium, May 2008.
14. Bhalodia A, Zhang S, Abreo F, Bao R. Fine-needle aspiration of salivary gland lesions: comparing onsite rapid interpretation with the final cytology diagnosis. Albert Smith LSUHSC-Shreveport Residents Research Symposium, May 2009.
15. Bhalodia A, Zhang S, Abreo F, Bao R. Fine-needle aspiration of salivary gland lesions: comparing onsite rapid interpretation with the final cytology diagnosis. CAP, Washington D.C., October 2009.
16. Zhang S, Bhalodia A, Thibodeaux J, Bagby J, Thomas J, Abreo F. Histology Follow-up of 194 High-Grade Squamous Intraepithelial Lesions in Adolescent Women. ASC, Denver, Colorado, November 2009.
17. Bonsib S, Bhalodia A. Intravenous Dissection, the Optimum Strategy for Staging of Renal Cell Carcinoma. USCAP, Washington D.C., March 2010.
18. Bhalodia A, Bonsib S. Venous Perfusion Optimizes the Fixation and Evaluation of Renal Vasculature and Parenchyma in Nephrectomy Specimens. USCAP, Washington D.C., March 2010.
19. Bhalodia A, Gu X, Bonsib S. Thrombotic Microangiopathy in Kidney Biopsies: Clinicopathologic Study of 46 Cases. USCAP, Washington D.C., March 2010.
20. Ravi A, Heldmann M, Elmajian D, Rowell A, Bhalodia A, Campbell E. Multimodality Imaging, Operative Approaches And the Pathologic Spectrum of Surgical Scrotal Disease. RSNA, Chicago, Illinois, November 2010.
21. Ojemakinde K, Bhalodia A, Bonsib S. Intravenous pT3 Renal Cell Carcinoma: The challenge of gross recognition. USCAP, San Antonio, February 2011.
22. Zhao C, Bhalodia A, Bonsib S et al. Venous Invasion in Renal Cell Carcinoma: Preoperative Imaging- Gross Correlation. USCAP, San Antonio, February 2011.

PROFESSIONAL AFFILIATIONS

United States and Canadian Academy of Pathology (Jul 2004 - Current)
 American Society of Clinical Pathology (Jul 2004 - Current)
 American Society of Nephrology (Jul 2009 - Current)
 Renal Pathology Society (Jul 2009 - Current)
 International Society of Urological Pathology (Jul 2009 - Current)
 Texas Indo-American Physician Society (Jul 2013 - Current)
 Digital Pathology Association (Jul 2022 - Current)

COMMITTEES

Blood Utilization Committee (Jul 2004 - Jun 2005)
 Medical Records Committee (Jul 2005 - Jun 2006)
 Infection Control Committee (Jul 2006 - Jun 2007, Jul 2008 - Jun 2009)
 Operative Procedures Committee (Jul 2007 - Jun 2008, Jul 2009 - Jun 2010)
 Pathology Quality Control Committee (Jul 2007 - Sep 2007)
 Graduate Medical Education Committee (Jul 2007 - Sep 2007)
 Renal Pathology Society Junior Member Liaison (Jul 2009 - Jun 2010)
 Departmental Quality Assurance/Quality Control (Jul 2010 - Jul 2011)
 Digital Pathology Association Education Committee (Jul 2022 - Current)

TEACHING EXPERIENCE

Cytopathology core curriculum

Clinicopathologic correlation conference

Medical student core lectures and labs

Allied health student core lectures

Residents In-service review conferences

Residents gross pathology conference

Renal pathology outreach cases of the week

REFERENCES

Stephen M. Bonsib, MD

Arkana Labs, Emeritus

✉ stephen.bonsib@arkanalabs.com ☎ 501-604-2695

Joel Thibodeaux, MD

Brown Pathology

✉ joel.thibodeaux@yahoo.com ☎ 318-573-1699

Roby Joyce, MD

Precision Pathology

☎ 210-646-0890

Fleurette Abreo, MD

Delta Pathology, Emeritus

☎ 318-675-5895